

Welcome to our English Assessment Services

Certify your students' level of English with the World's English Experts





British Council



CEFR Levels



**Primary
English Test**



**Secondary
English Test**



Aptis ESOL



IELTS

British Council

The world's expert in English Language

Founded in 1934, the British Council is the UK's international organisation for cultural relations and educational opportunities. We support peace and prosperity by building connections, understanding and trust between people in the UK and countries worldwide through arts and culture, education and English Language.



Build understanding
connections and trust



Deliver qualifications
worldwide



Our unique expertise has contributed to the development of our reputation as the world's leading experts in the field.

British Council English Assessment

The British Council has been actively involved in language test development worldwide. Over the last 80 years, we have been working with many of the United Kingdom's best known examination boards, higher education institutions and professional bodies to deliver qualifications in over 200 countries around the world.

Life-changing English Assessments

Our Commitment

From introducing young learners to their English education journey, to **upskilling secondary school students** and opening **new opportunities to school-leavers, graduates** and **professionals** worldwide, our trusted and high-quality English assessments **change lives of millions** around the world every day.

Our Work with Governments and Partners

Working with governments and our partners in the education sector, we help around **4 million people** across **200 countries to gain English language qualifications** and **provide resources to 70 million** English language learners and teachers. In everything we do, we share the UK's expertise in arts and culture, education and the English language.

EDI

Equality, diversity, and inclusion (EDI) run through our work around the world, including offering exams. Our goal is to develop inclusive assessments and projects that bring together people with different experiences and backgrounds. Our aim is to make everyone's experiences richer, and ultimately lead to more inclusive societies.

We recognise that EDI areas intersect and form our identity, together with other characteristics, such as socio-economic status and geographical location. We want everyone who comes into contact with us to feel valued and respected, we are committed to support our partners and stakeholders in establishing, developing and improving equality, diversity and inclusion practices in teaching and assessments as we take pride in offering any candidates a seamless and inclusive learning and assessment experience.

Why partner with the British Council?

— You will be connected to the world's expert in English Assessment and benefit from the British Council's extensive experience. You will also be part of an exciting, engaging and expert community of global partners, where education and building the future of next generations come first.



— Brand association as **British Council Partner**



— **Dedicated exam dates** for your students



— **Marketing and business** development support



— **Secure and inclusive** procedures for test administration and delivery



— **Training and development opportunities** for you and your teaching staff



— Access to **free preparation resources** by our global experts



— **Easy and seamless** registration process



— **Operational support** for test delivery



— **Information and branding materials**



— **Dedicated account management**



Primary English Test



Secondary English Test



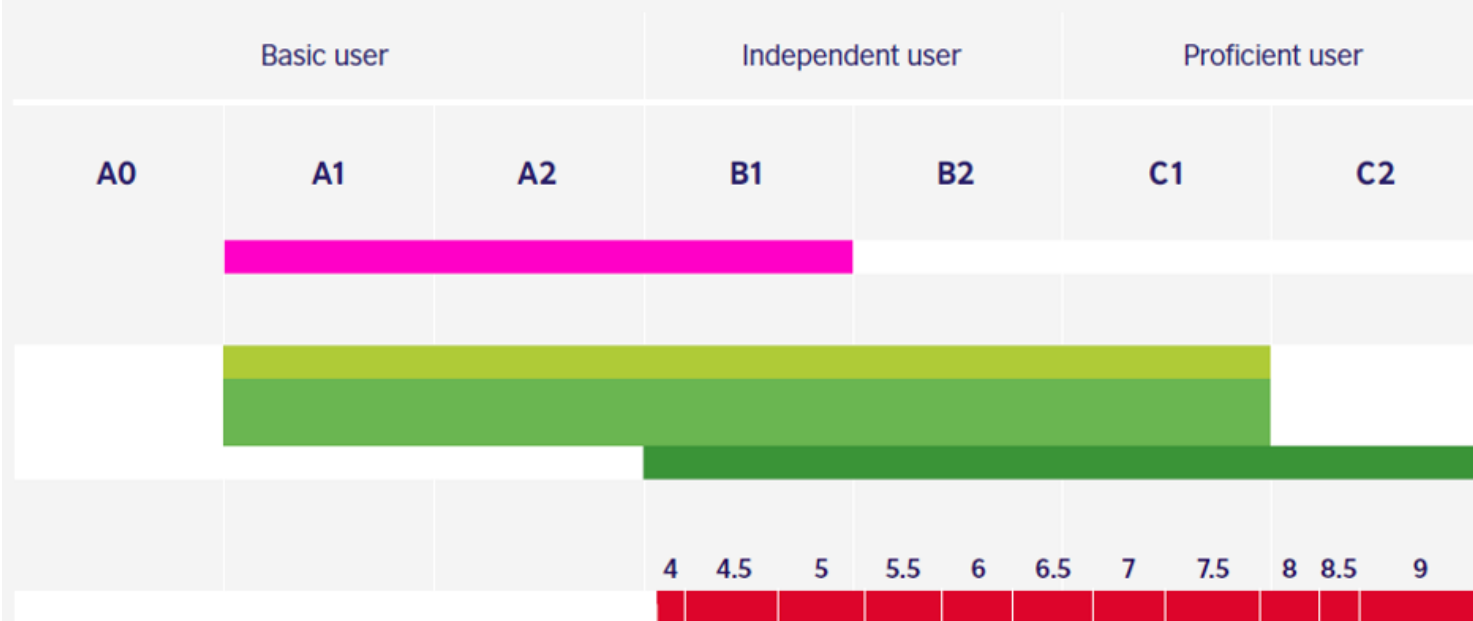
Aptis ESOL



IELTS

CEFR Levels

British Council's English Assessment Tests



CEFR Levels

Primary English Test

Secondary English Test
 Aptis ESOL General
 Aptis ESOL for Teachers
 Aptis ESOL Advanced

IELTS



British Council



CEFR Levels



**Primary
English Test**



**Secondary
English Test**



Aptis ESOL



IELTS


 Primary
English Test

 Secondary
English Test

Aptis ESOL

IELTS

Start

Grow

Raise

 Go
Places

A continuous learning approach

The first step to assess English proficiency level for young learners. The language journey starts in schools with the world's experts in English assessments to prepare young learners for a future of excellence.

Improve **students' English skills with a tool to support English teaching** in school, to assess skills challenging to test and to improve the pupils' overall English preparation standards.

Raise students' profile, show their English proficiency with a test that **makes them English-ready for work or to continue their studies in Italy** with an extra gear.

Make students **ready for a world of opportunities** before they leave school with an assessment to study, work and live anywhere English is the main language of communication.

Start

Grow

Raise

 Go
Places



British Council



CEFR Levels



Primary English Test



Secondary English Test



Aptis ESOL



IELTS



Primary English Test

The **British Council Primary English Test** is reinventing the English general proficiency testing experience for young learners, their schools and families in the transition from Primary to Secondary school.

9 – 11 years old

A1 – B1 levels

What is the new Primary English Test? Who is it for?

60-75 minutes digitally-delivered
general proficiency test (computer-only)



Target Partner: Primary and Lower Secondary schools (K12 and language tuition centres).



Nature of Test: course-agnostic, age appropriate, storyline-driven, with engaging animations.



Technology: adaptive, machine scored via AI technology (fast, ethical and transparent results), remotely proctored upon request.



Target User: students transitioning from Primary to Secondary school, globally (9-11 years old).



Pedagogy: integrated skills experience, comprehensive reports on 4 separate skills, aligned to CEFR (A1 to B1) and other scales.



Delivery: in schools via computers (out-of-school options available via remote proctoring).

Other than the main test, what resources do I have?



Ongoing

(every three months following release, for the first two years)

✓ Content: new question items

✓ AI technology enhancements: model refinement



On Roadmap / TBC

✓ New panel (ie brand new storyline) every two years

✓ Tablet edition, prep courses and resources bank, teacher training



Free resources

✓ Product website

✓ Orientation video, sample scoring report, system requirements

✓ Technical manual

✓ Demo activities (linear, unscored)



Free to those who purchase the test

✓ Practice test (linear, unscored, feedback provided)

✓ Teacher / Invigilator manual

✓ Live computer checks

✓ In-school support ('test delivery manager' role TBC.)

Scoring Certificate to CEFR

Overall CEFR and 4-skills scores, plus alignment to additional scales.

- ✓ The report includes a cover page (a student certificate) and additional information including 'can-do' statements.
- ✓ Scores available instantly to teachers upon submission, or within 48h in the case of 'unscorable' ie responses the machine doesn't recognise, mostly in the case of Speaking.
- ✓ In future scoring reports may be adapted to target the needs of key stakeholder groups (1) students and parents, and (2) teachers.





British Council



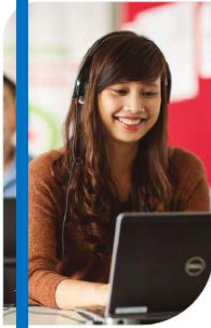
CEFR Levels



Primary English Test



Secondary English Test



Abtis ESOL



IELTS

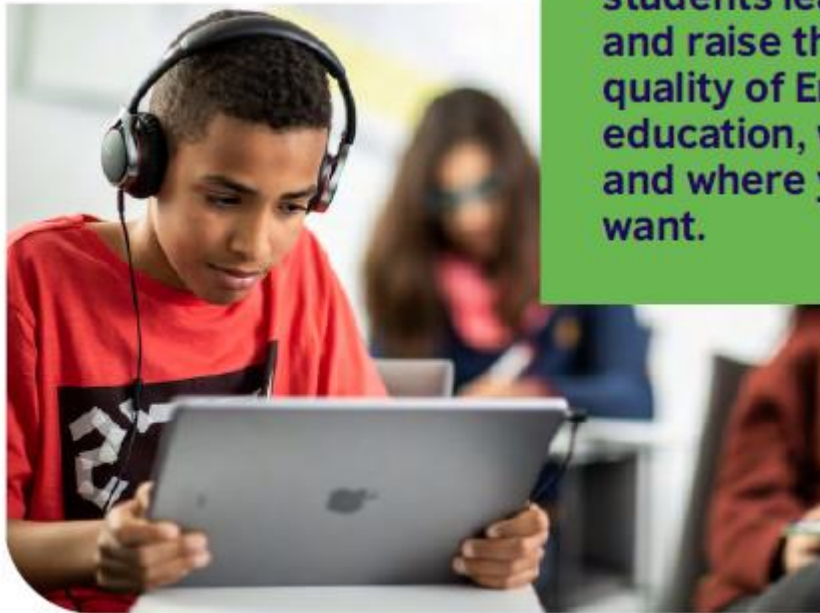


Secondary English Test

The test that allows to grow your students' potential.

- ✓ Secondary English Test is a **four-skills, computer-based English test** designed for school-aged learners / education institutions and assessing levels **A1 to C1** on the **CEFR**.
- ✓ **Adapted** to reflect the activities and scenarios that occur in a teenager's everyday life.

Why Secondary English Test for your Education Institution?



—

Improve your students learning and raise the quality of English education, when and where you want.



—

Reliable and accurate English language testing is essential for improving students learning and raising the quality of language education.



—

Secondary English Test offers **CEFR mapped** assessment at all levels for students.



—

Secondary English Test offers superior **customised flexibility**, with **on-demand delivery** when you want **where** you want and how often you want.



—

Allows students to **focus** purely on their English skills as topics are familiar to them.

With Secondary English Test you can:



Place

students in the right courses



Assess

readiness for taking high-stakes certificated exams



Identify

strengths and weaknesses to inform teaching



Evaluate

learning programmes



Test students' progress

over extended periods of study

The Secondary English Test can be integrated into existing education systems in any type of school.



Main features of Secondary English Test



Validated by research

Backed by intensive research, based on +80 years' experience.



Computer delivered

100% computer based in supervised face-to-face sessions.



Remotely marked

R/L/G/V marked automatically; S/W by trained examiners.



Quick results 48-72 hours

Quick, safe, precise results in just 48-72h.



CEFR aligned

Mapped to the Common European Framework of Reference (A1-C).

Secondary English Test duration



Grammar and Vocabulary

25 minutes



Reading

30 minutes



Writing

50 minutes



Listening

55 minutes



Speaking

12 minutes



Secondary English Test Testimonial

“I had never taken one of these exams, the truth is, it was a little difficult but worth it.”

Test Taker from:
Santo Tomas de Aquino School Inca, Mallorca

“As it’s done on the computer, you don’t take that long, the listening is clear and you can see the timing.”

Test Taker from:
Puerto Rosario School, Islas Canarias

The Secondary English Test Certificate



The Secondary English Test results are presented in two ways:

- ✓ Numerical score on a scale of 0 to 50 for each of the four language skills, plus a numerical score for grammar and vocabulary components.
- ✓ CEFR level: Each skill is assigned to a CEFR level as well as an overall CEFR level, calculated from the CEFR levels assigned for each skill.

Sample certificate

Candidate Report

Candidate Name: **NABE & SUZANNE** ID: 123456789 Test Date: 09/06/2023
Centre: **British Council Spain** Test Package: **The Secondary English Test - Speaking, Listening, Writing & Reading**

Scale Scores

Skill Name	SKILL Score
Listening	49/50
Reading	32/50
Speaking	43/50
Writing	44/50
Final Scale Score	166
Grammar and Vocabulary	38/50

Global CEFR Level: B2

CEFR Skill Profile

Skill	CEFR Level
Listening	C
Reading	B1
Speaking	B1
Writing	B1
Overall CEFR Grade	B2

Candidate Stamp **Administrator's signature**
Date: 9 June 2023

This report verifies the person named above achieved the stated score under conditions supervised by the British Council Spain. www.britcouncil.es Tel: 0034705



British Council

CEFR Levels

Primary English Test

Secondary English Test

Aptis ESOL

IELTS



Aptis ESOL

An Innovative English language test.

- ✓ Qualification developed by the British Council language testing experts
- ✓ Four-skills English test combined with grammar and vocabulary
- ✓ 100% computer-based, delivered in supervised face-to-face sessions
- ✓ Tests the ability to communicate in English in real-life situations, with quick accurate results
- ✓ Mapped to the Common European Framework of Reference (CEFR)
- ✓ Provides candidates with a Aptis ESOL certificate
- ✓ Regulated by The Office of Qualifications and Examinations Regulation (Ofqual*)

* Ofqual is the UK government body that regulates qualifications, examinations and assessments in England.

Why offer Aptis ESOL?



Regulated by Ofqual, the Office of Qualifications and Examinations Regulation in England.



Secure and reliable test delivery in face-to-face test sessions supervised by the British Council.



Trusted by governments, educational institutions and employers and 1.8 million people in 85 countries around the world.



Affordable and flexible, with multiple dates and locations and fast results, delivered in 48-72 hours.



Transparent CEFR linked testing and scoring system.



Easy to set up, administrate and deliver in a safe and secure test environment.



British Council support and expertise throughout test process.

Summary of Aptis ESOL features



Validated by research

Backed by intensive research, based on +80 years' experience.



Computer delivered

100% computer based in supervised face-to-face sessions.



Remotely marked

R/L/G/V marked automatically; S/W by trained examiners.



Quick results 48-72 hours

Quick, safe, precise results in just 48-72h.

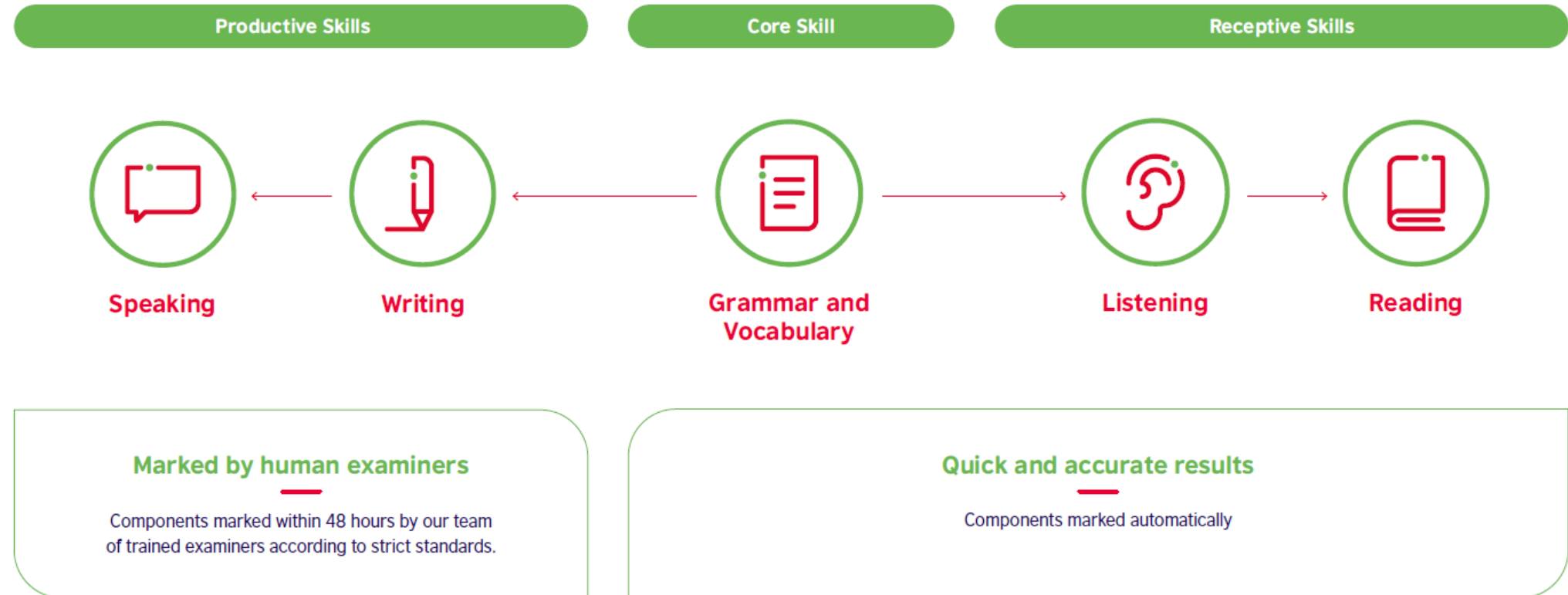


CEFR aligned

Mapped to the Common European Framework of Reference (A1-C2).

Accurate, fast and reliable results

Aptis ESOL test components



Aptis ESOL test variants

All Aptis ESOL variants have the same testing methodology and format.

Aptis ESOL General



Aptis ESOL for Teachers



Aptis ESOL Advanced



Tests **A1** to **C** levels on the CEFR

Tests **B1** to **C2** levels on the CEFR

Aptis ESOL test components

Productive Skills



Speaking
12 mins
(10 mins Advanced)



Writing
50 mins
(45 mins Advanced)

Core



**Grammar and
Vocabulary**
25 mins

Receptive Skills



Listening
40 mins
(30 mins Advanced)



Reading
35 mins
(60 mins Advanced)

Aptis ESOL Certificate: recognised and detailed

Aptis ESOL results are presented in two ways:

- ✓ Numerical score on a scale of 0 to 50 for each of the four language skills, plus a numerical score for grammar and vocabulary components.
- ✓ CEFR level: Each skill is assigned to a CEFR level as well as an overall CEFR level, calculated from the CEFR levels assigned for each skill.

BRITISH COUNCIL **ofqual**
REGULATED

Aptis ESOL
International Certificate

John Smith **23.4.2020** **846463930**
Test taker name Test date Test taker reference number

British Council **Aptis Advanced -** **1234567890** **ID card**
Spain Madrid **Listening Reading** **126373464613726**
Test Centre **Speaking Writing** ID type
ID number

Overall CEFR level:

Skill name	Skill score
Listening	45/50
Reading	35/50
Speaking	43/50
Writing	46/50
Final Scale Score	177
Grammar and Vocabulary	49/50

CEFR skill profile

Skill name	CEFR grade
Listening	C2
Reading	C1
Speaking	B2
Writing	B1
Overall CEFR grade	A2-A1

24.4.20210
Centre stamp and date

Signed
The results appear verified for the person named above achieved by the British Council.
Please see user for CEFR and descriptions.

Overall CEFR level:

Skill name	Skill score
Listening	48/50
Reading	35/50
Speaking	43/50
Writing	46/50
Final Scale Score	177
Grammar and Vocabulary	49/50

CEFR skill profile

Skill name	CEFR grade
Listening	C2
Reading	C1
Speaking	B2
Writing	C1
Overall CEFR grade	A2-A1





British Council

CEFR Levels

Primary English Test

Secondary English Test

Aptis ESOL

IELTS



IELTS

What is IELTS?

IELTS is designed to assess the English language ability of people who intend to study or work where English is the language of communication.

+16 years old

B1 - C2 levels



Listening



Reading



Writing



Speaking

IELTS: International English Testing System

The must-do test for those who want to study, work, or live in an English-speaking context



IELTS – the International English Language Testing System – is the world’s most popular and widely accepted English language test.



Pioneer in four-skills English language testing for over 30 years.



Evaluates the **four skills**: listening, reading, speaking and writing, on a 9-band scale (**B1 to C2** on the CEFR)



Recognised by more than 11,500 employers, universities, schools and immigration bodies worldwide.



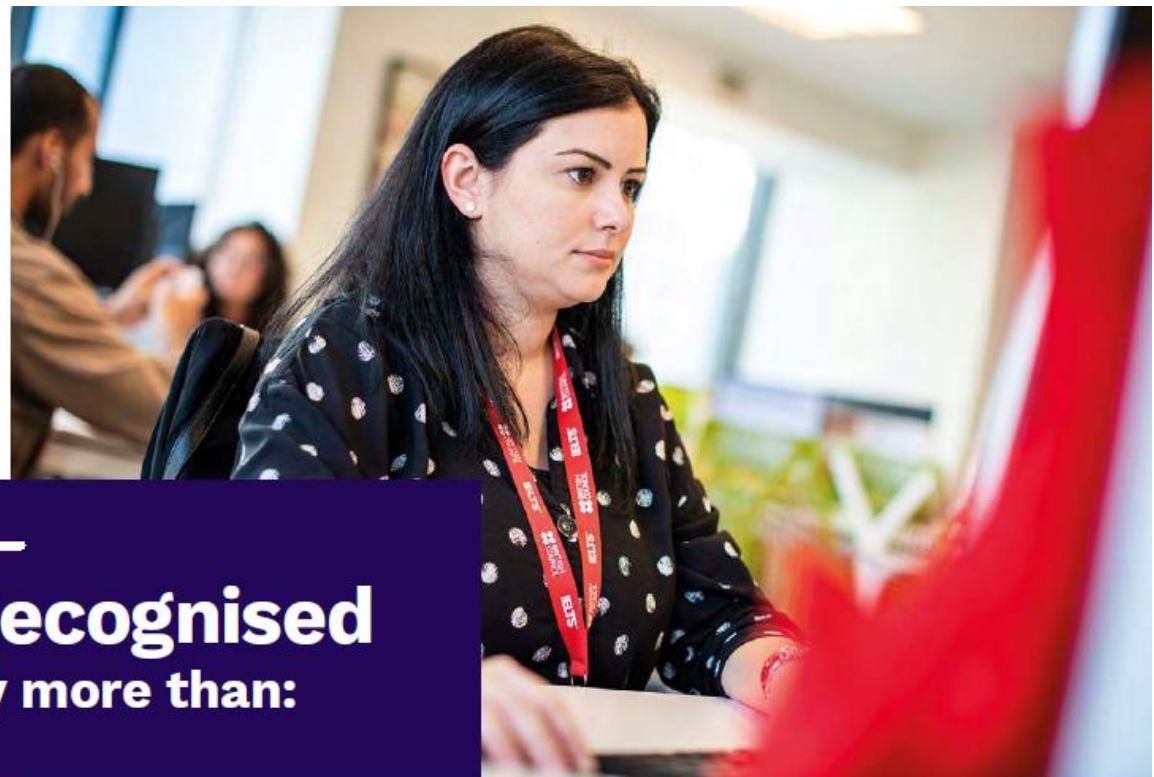
Developed by the world’s leading language assessment experts, IELTS is **jointly owned** by the British Council; IDP IELTS; and Cambridge University Press & Assessment.



The ideal test for **international mobility** for educational, professional and migration purposes.

Why offer IELTS?

- ✓ IELTS is the **most widely** accepted English Language Test worldwide.
- ✓ **Governments** in Australia, Canada, New Zealand and the United Kingdom accept IELTS for immigration applications.
- ✓ **Reliable and consistent** measure of English language proficiency.
- ✓ **Trusted and secure**, ensuring the protection and integrity of test taker results.
- ✓ Designed by **world leading experts** in language assessment and test delivery.
- ✓ British Council offers a **wide range of test preparation support** for test takers and teachers.



**Recognised
by more than:**

 **11,500**
organizations

 **140**
countries

3,000 **2,000**
in the USA in Europe

Test format and duration



Listening

30 minutes

4 sections

40 items



Reading

Academic and General training

60 minutes

3 sections

40 items



Writing

Academic and General training

60 minutes

2 tasks




Speaking

11-14 minutes

3 parts

IELTS Score and Results

- ✓ A **band score** from **0 to 9** is awarded for each of the four skills as well as an overall score, mapped to the Common European Framework of Reference (**CEFR**)
- ✓ IELTS on computer – **3 to 5 calendar days** after test dates
- ✓ The British Council can send **up to 5 Test Report Forms** directly to institutions on request
- ✓ IELTS results are published and certified in the Test Report Form (TRF) and are available in digital



Two white checkmarks on a dark blue background.

Basic user		Independent user			Proficient user							
A1	A2	B1	B2	C1	C2							
		4	4.5	5	5.5	6	6.5	7	7.5	8	8.5	9

IELTS

Free Preparation materials

Available to all Test Takers

IELTS Ready: Premium

British Council's **new** post-registration preparation platform

Mobile friendly platform, **available to all candidates** who purchase **any form** of IELTS from the British Council

FREE to all test takers from when they **register** for IELTS **until test day**

With IELTS Ready: Premium test-takers get:

- ✓ A **large series of practice tests and exercises**, modelled to **reflect real IELTS** exams questions to help test takers refine test taking skills:
 - **40** practice tests (**25** Academic and **15** General)
 - Exercises in all **4** skills
 - **Timed** or **free** practice
 - In depth **Get to know IELTS** section
 - **Live** and **recorded** lessons
- ✓ **Adaptive content**, building tests based on candidate's previous attempts in the areas that need most practice
- ✓ **Guided learning plans** through exercises, based on expert advice or candidate's performance
- ✓ A **Real-time comparison** of candidate's progress against target score
- ✓ **Model answers** to check against candidate's performance
- ✓ An **Ask the Teacher** function which allows **any question answered by an IELTS expert**



Thank you

www.britishcouncil.it

